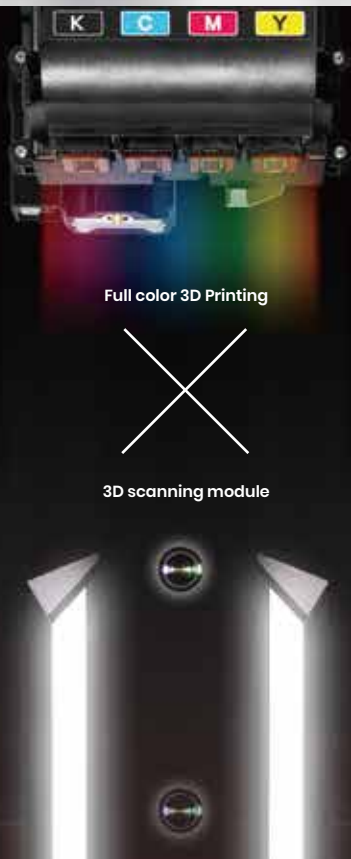


da Vinci Color AiO*

All-in-One Redefined

Change the way you work.
Scan and print in full color using only one machine,
the da Vinci Color AiO.

*Model name: PartPro200 xTCS



Scan and Print. In Full Color.

Productivity matters. With a built-in 3D scanning module, streamline your modeling workflow. 3D scan your favorite objects, make edits to them and print directly in full color. All these using only one 3D printer.



Original object

Scan 3D Model File

Full Color 3D Printing

Seamless Integration

Optimize your scans with XYZscan Color. A scanning software tool designed with a wide range of settings for the best scan results. Scan files can be exported in .obj and .stl formats, allowing for post-editing with XYZmaker or other software.



XYZscan Color



XYZmaker



OBJ



Upgradable Laser Engraving

Bonus. The da Vinci Color AiO also has laser engraving capability. Simply swap the print head for our laser engraver add-on. Add a professional touch to your creative projects by engraving on materials such as paper, cardboard, leather, wood, and plastic.



All New Printing Experience

Upgradable wireless connectivity and automatic print-bed correction



Magnetic easy-to-remove print bed



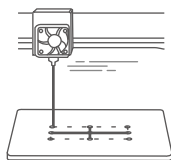
Easy-to-use color touch screen

Material inventory detector, allowing you to keep track of filament and stop and resume a print

Print Speed

180

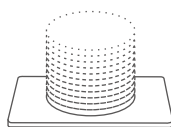
mm /sec



Layer Resolution

100 - 400

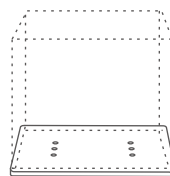
microns



Max. Build Area (WxDxH)

200 x 200 x 150

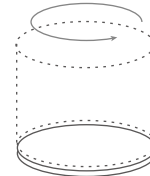
mm



Scan Size (Ø x H)

50 x 50 - 140 x 140

mm



Specification

Print Technology	Color Texture Inkjet Printing 3D Structure Fused Filament Fabrication (FFF)
Max. Build Area (WxDxH)	Mono Color Printing : 200 x 200 x 150 mm Full Color Printing : 185 x 185 x 150 mm
Layer Resolution	100 - 400 microns
XY Positioning Precision	X/Y 12.5 microns
Z Positioning Precision	0,0004 mm
Supported File Formats	.amf / .ply / .obj / .stl / .3cp / .3mf
Material Compatibility	3D Color-inkjet PLA / PLA / Tough PLA / PETG / Antibacterial PLA / *XYZ Carbon Fiber / *Premium Metallic PLA (*Optional Extruder)
Filament Diameter	1,75 mm
Nozzle Diameter	0,4 mm
Max. Moving Speed	180 mm/s
Print Bed	Ez-removable Metal

Calibraiton	Auto
Scan Technology	Photogrammetry 3D
Scan Size (Ø x H)	50 x 50 mm - 140 x 140 mm
Scan Resolution	5M pixel
Scan Accuracy	1.48 mm
Output File Types	.stl / .obj
Engraving Area	200 x 200 mm
Laser Wavelength	450nm + 5nm/-10nm InGaN
Output Power	350mW ± 10%
Supported Image Formats	.jpg / .png / .gif / .bmp
Connectivity	USB 2.0 Cable / WiFi 802.11 b/g/n / USB Flash Drive
Operating Systems	Windows 7 / 8 / 8.1 / 10 (64 bits) MAC OS X 10.10 / 10.11 / 10.12 / 10.13
Power Requirement	100V - 240V 240W
Product Dimensions (WxDxH)	600 x 581 x 640 mm
Product Weight	34 kg

* Must be upgraded to Hardened Steel Nozzle

** All features and specifications are subject to change without prior notice. For more information, please visit our website at www.xyzprinting.com



XYZ PRINTING

www.xyzprinting.com