



reddot winner 2024
best of the best



MIRACO Plus 3D Scanner

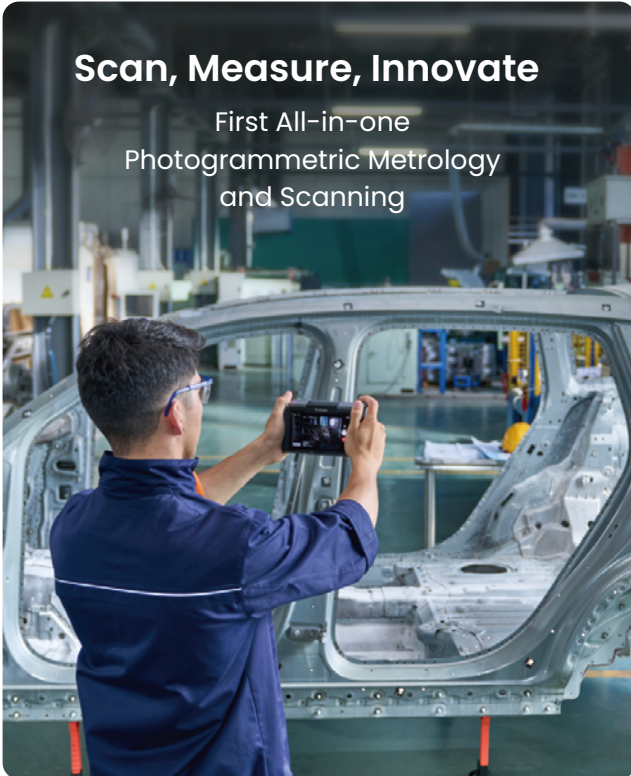
Everything in One Device: Scan, Measure, and Innovate

MIRACO Plus 3D Scanner

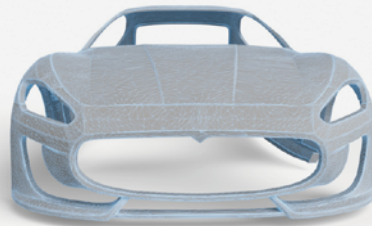
The ultra-high-resolution Photogrammetric Metrology Kit included with MIRACO Plus is essential for reducing cumulative errors in global point cloud stitching.

Scan, Measure, Innovate

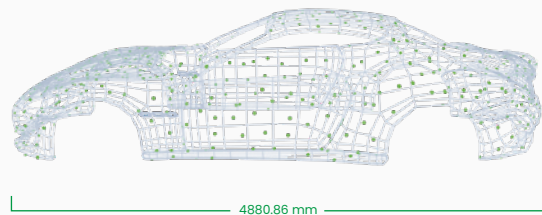
First All-in-one
Photogrammetric Metrology
and Scanning



Up to **0.04 mm** Single-frame Accuracy



Photogrammetric Length Accuracy
0.02 mm + 0.05 mm x L (m)



Go Big, Go Small



*Screw Size: 9.97 × 51.2 mm

Up to 2x Optical Zoom



x1



x2





Photogrammetric Metrology
High Accuracy 3D Measurement



Up to 0.04 mm
Single-frame Accuracy



2x Optical Zoom
Capture Finer Details



Faster Scanning Speeds
Up to 20 fps



8K Color Capture
48 Megapixels RGB Camera



Two Capture Modes
Single-shot & Continuous



2K AMOLED
180° Adjustable Screen



Stabilized Scanning
9-axis IMU

All-in-one Workflow



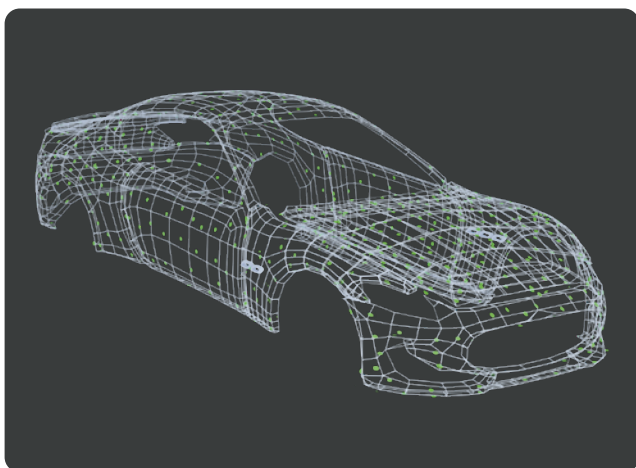
STEP 1: Prepare

Place the scale bars, coded targets, and markers on or around the object's surface.



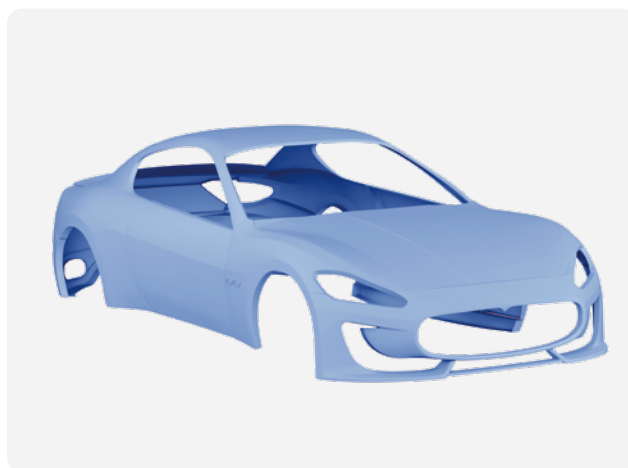
STEP 2: Shoot

Shoot photos of the object at different heights and angles till fully captured.



STEP 3: Calculate and Capture Point Clouds

Calculate the markers, then capture the point clouds all on MIRACO Plus 3D scanner.



STEP 4: Process and Export


Process, edit, and then transfer to a PC.


Specifications


Product Name	MIRACO Plus 3D Scanner
Technology	Quad-camera Infrared Structured Light with Optical Zoom, and Ultra-resolution Photogrammetric Metrology
Single-frame Precision, up to ^①	0.02 mm
Single-frame Accuracy, up to ^②	0.04 mm
Photogrammetric Length Accuracy ^③	0.02 mm + 0.05 mm × L (m)
Fused Point Distance, up to	0.05 mm
Working Distance	100 – 1000 mm
Single Capture Area at Nearest Distance	28 × 53 mm at 100 mm
Single Capture Area at Furthest Distance	975 × 775 mm at 1000 mm
Minimum Scan Volume	10 × 10 × 10 mm
Maximum Scan Volume	4 × 4 × 4 m
Scanning Speed, up to	20 fps
Camera Resolution, up to	Depth Camera: 2 Megapixels RGB Camera: 48 Megapixels
CPU	8 core ARM A76, 2.4 GHz, Mali G52 GPU
3D Light Source ^④	Class 1 Infrared Light
Memory (RAM) + Internal Storage	32 GB + 256 GB
Fill Lights ^⑤	Depth Camera: 8 RGB Camera: 2
Position Sensors	9-axis IMU

Notes:

- ① ② Precision and Accuracy were both acquired in a controlled lab environment. Actual results might vary, subject to the operation environment.
- ③ L is the maximum measuring distance in meters.
- ④ Class 1 Laser: Avoid direct eye exposure for extended periods! Refer to Standards for Class 1 Lasers for details.
- ⑤ This product has flashing lights, which may not be suitable for people with photosensitive epilepsy.

 +1 (888) 807-3339

 sales@revopoint3d.com

 www.revopoint3d.com



Contact Us



Follow Us