



RANGE 2 3D Scanner

Broader Vision, Boundless Creation

RANGE 2 3D Scanner

Revopoint RANGE 2 is a portable handheld structured infrared light 3D scanner for capturing large objects.

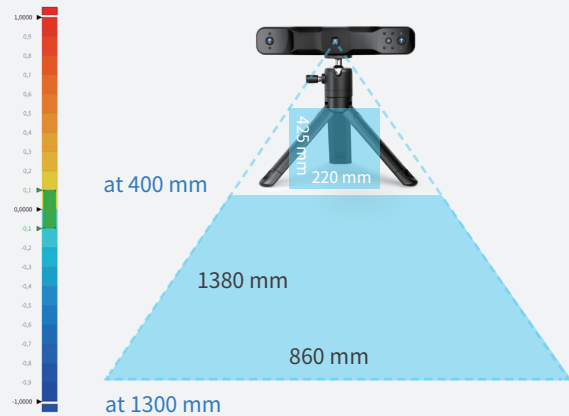
Reliability Matters

Up to **0.1 mm**

Single-frame Precision



Bigger Capture



Fast Scanning Speeds

Up to **16 fps**



Up to 2 Megapixels

Depth/RGB Camera

Up to **0.1 mm**

Fused Point Distance



USB Type-C
Wi-Fi 6



4 Flash LEDs

Popping Color Scans



9-axis IMU

Smarter Tracking

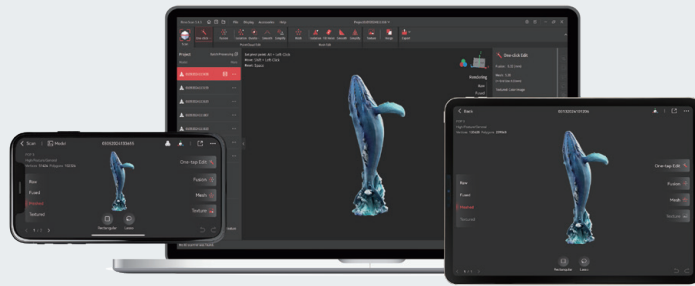
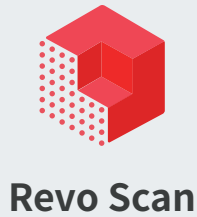


Greater Control

Effortless Button Control



High-Performance Software



Intuitively control your scans and edit your data using the free Revo Scan software. It's compatible with iOS, Android, Windows, and macOS devices and supports STL, PLY, OBJ, ASC, 3MF, GLTF, and FBX file formats for seamless workflows with most CAD, 3D modeling, and slicer software.

Applications



Industrial Modifications

Start saving tens of hours of measurement and modeling time by using RANGE 2's fast capture speeds to create detailed 3D models in minutes that are ready for replication or modification.



Digitizing Ancient Artifacts

When capturing large ancient items or stone reliefs, RANGE 2's non-contact scanning removes the risk of damage caused by traditional measurement and research methods.



Car Modification

Swiftly capture the shape of a car or individual components to help facilitate easier car modification and restoration.



Clothing Design


Complete full-body scans in less than 60 seconds to create accurate, detail-rich 3D models for fashion design.


Specifications


Product Name	RANGE 2 3D Scanner
Technology	Dual-camera Infrared Structured Light
Single-frame Precision, up to ^①	0.1 mm
Single-frame Accuracy, up to ^②	0.3 mm
Fused Point Distance, up to	0.1 mm
Working Distance	400 - 1300 mm
Single Capture Area at Nearest Distance	220 × 425 mm at 400 mm
Single Capture Area at Furthest Distance	860 × 1380 mm at 1300 mm
Minimum Scan Volume	50 × 50 × 50 mm
Maximum Scan Volume	4 × 4 × 4 m
Scanning Speed, up to	16 fps
Camera Resolution, up to	Depth Camera: 2 Megapixels RGB Camera: 2 Megapixels
CPU	2 core, 1.8 GHz
3D Light Source ^③	Class 1 Infrared Light
Fill Lights ^④	Depth Camera: 4 RGB Camera: 4
Position Sensors	9-axis IMU

Notes:

- ① ② Precision and Accuracy were both acquired in a controlled lab environment. Actual results might vary, subject to the operation environment.
- ③ Class 1 Laser: Avoid direct eye exposure for extended periods! Refer to Standards for Class 1 Lasers for details.
- ④ This product has flashing lights, which may not be suitable for people with photosensitive epilepsy.

 +1 (888) 807-3339

 sales@revopoint3d.com

 www.revopoint3d.com



Contact Us



Follow Us