



MINI 2 3D Scanner

Unleash Precision, Embrace Innovation

MINI 2 3D Scanner

Capture the tiniest detail with the Revopoint MINI 2 3D scanner's powerful blue light technology.



Metrology-grade Precision

Up to **0.02 mm**
Single-frame Precision

Up to **0.05 mm**
Single-frame Accuracy

2 Megapixels

Uniform Color Scans



Ultra-high Resolution Blue Light

Capture Every Detail



Fast Scanning Speeds

Up to **16 fps**



Working Distance
120 - 250 mm



Extended Single
Capture Range
**168 × 132 mm
at 250 mm**

USB Type-C + Wi-Fi 6

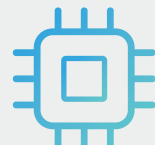
Faster Connectivity



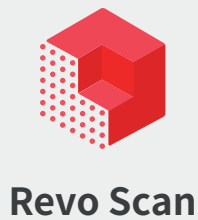
9-axis IMU
Smarter Tracking



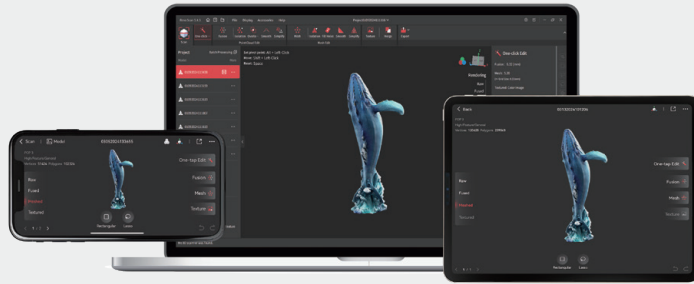
2 core 1.8 GHz
CPU



High-Performance Software



Revo Scan



Intuitively control your scans and edit your data using the free Revo Scan software. It's compatible with iOS, Android, Windows, and macOS devices and supports STL, PLY, OBJ, ASC, 3MF, GLTF, and FBX file formats for seamless workflows with most CAD, 3D modeling, and slicer software.

Applications



Quality Control

Speed up projects and production by reliably capturing every dimension, surface flaw, and imperfection with clarity.



Customized Healthcare

Quickly capture dental molds or ear canals to create perfectly fitting customized healthcare solutions.



Digitizing History

Capture historical items' intricate details and color for restoration, preservation, or digital exhibitions.



Detailed Design


Create ready-to-use 3D models from organic shapes like flowers or shells for your design projects with no complex 3D modeling needed.


Specifications


Product Name	MINI 2 3D Scanner
Technology	Dual-camera Blue Structured Light
Single-frame Precision, up to ^①	0.02 mm
Single-frame Accuracy, up to ^②	0.05 mm
Fused Point Distance, up to	0.02 mm
Working Distance	120 – 250 mm
Single Capture Area at Nearest Distance	52 × 64 mm at 120 mm
Single Capture Area at Furthest Distance	168 × 132 mm at 250 mm
Minimum Scan Volume	10 × 10 × 10 mm
Maximum Scan Volume	0.5 × 0.5 × 0.5 m
Scanning Speed, up to	16 fps
Camera Resolution, up to	Depth Camera: 2 Megapixels RGB Camera: 2 Megapixels
CPU	2 core, 1.8 GHz
3D Light Source ^③	Class 1 Blue Light
Fill Lights ^④	Depth Camera: 4 RGB Camera: 2
Position Sensors	9-axis IMU

Notes:

- ① ② Precision and Accuracy were both acquired in a controlled lab environment. Actual results might vary, subject to the operation environment.
- ③ Class 1 Laser: Avoid direct eye exposure for extended periods! Refer to Standards for Class 1 Lasers for details.
- ④ This product has flashing lights, which may not be suitable for people with photosensitive epilepsy.

 +1 (888) 807-3339

 sales@revopoint3d.com

 www.revopoint3d.com



Contact Us



Follow Us